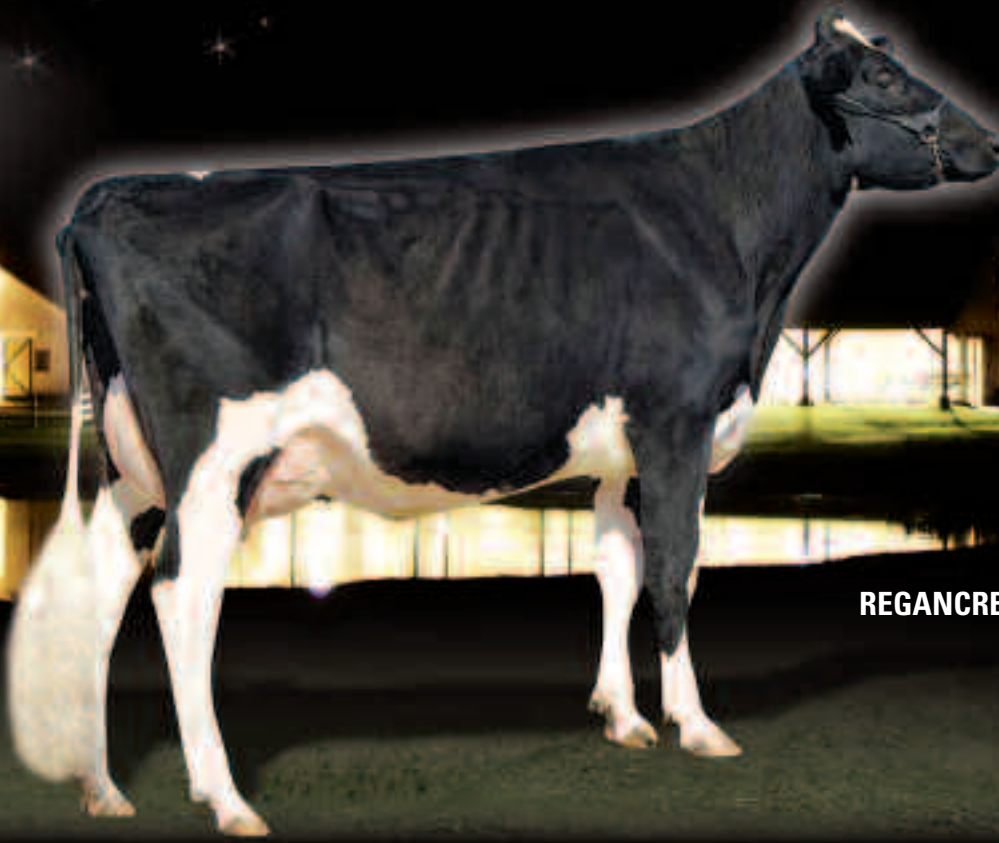


Photo©Kathy DeBruin



**REGANCREST G BEDAZZLE-ET**  
**VG-87 2Y**  
#1 Type cow in US

# 11 REGANCREST G BEDAZZLE-ET VG-87 2Y



**REGANCREST G BEDAZZLE-ET**  
HOUSAF62496924 \*BLF ET B:2006 Jan 02  
VG-87-2YR-USA  
USA-PTA Apr\*08 49%Rel CTPI+1983  
LB M+1479 F+67 %F+0.05  
SCS 2.84 P+48 %P+0.01  
USA-PTA Apr\*08 53%Rel Conf+4.14

01-11 166 13776 4.9 677 3.0 411 (true protein) RIP

Consigned by:  
R-E-W FARM  
Tel: 860-642-7262

4<sup>th</sup> thru 6<sup>th</sup> Dam :

**REGANCREST MARK CHAIRMAN BEA**  
EX-91-2E-USA GMD DOM  
07-09 2x 365d 33629 1276 3.8 1052 3.1  
**REGANCREST BOARD CHAIRMAN BEA**  
EX-90-6YR-USA  
05-09 3x 365d 26010 1058 4.1 884 3.4  
**REGANCREST APACHE STANDOUT BEA**  
VG-86-7YR-USA

**BRAEDALE GOLDWYN**  
HOCANM10705608 \*BLF\*TV GT  
GP-84-8YR-CAN EXTRA'05  
F&L:83 DS:84 R:87  
CAN-EBV Apr\*08 97%Rel LPI+2534/99%  
KG M+813/60% F+62/95% %F+0.32  
SCS 2.52 P+40/84% %P+0.12  
CAN-EBV Apr\*08 96%Rel Conf+18/99%  
MS+16 F&L+16 DS+11 R+7  
Progeny Data: 1807 Daus: 79% GP+  
8EX 253VG 1158GP 367G 21F  
1040 DAUS ME AVG: 24802 948 3.8 778 3.1  
AVG BCA: M213 F220 P213

**REGANCREST-PR BARBIE-ET**  
HOUSAF60602011 \*TV ET B:2001 Jul 24  
EX-92-6YR-USA DOM GMD  
USA-PTA Apr\*08 69%Rel CTPI+1834  
LB M+1201 F+25 %F-0.07  
SCS 2.95 P+39 %P+0.01  
USA-PTA Apr\*08 71%Rel Conf+3.88

02-06 305 26719 1053 3.9 884 3.3  
365 31688 1236 3.9 1049 3.3  
1 LACT: 48309 1847 3.8 1646 3.4 LB  
NOM. ALL-AMERICAN JR.3-YR 2004

**SHOREMAR JAMES**  
HOCANM5902195 \*BLF\*TV GT  
GP-81-2YR-CAN EXTRA'98  
CAN-EBV Apr\*08 99%Rel LPI+275/38%  
KG M-142 F+18 %F+0.23 P+19 %P+0.23  
CAN-EBV Apr\*08 99%Rel Conf+5

**BRAEDALE BALER TWINE**  
HOCANF6860888 \*BLF ET GT  
VG-86-2YR-CAN 21\*(24/82)  
02-01 305 26666 1302 4.9 886 3.3  
365 30906 1521 4.9 1051 3.4  
BCA 299 397 314  
1 LACT: 59636 2996 5.0 2215 3.7 LB

**REGANCREST ELTON DURHAM-ET**  
HOUSAM2250783 \*CV\*BLF\*RF ET GT  
EX-90-7YR-USA GM  
MACE-EBV Apr\*08 96%Rel MLPI+1770  
KG M+909 F-8 %F-0.43 P+42 %P+0.13  
MACE-EBV Apr\*08 95%Rel Conf+16

**REGANCREST JUROR BRINA-ET**  
HOUSAF17014963 ET  
EX-92-4YR-USA GMD  
02-06 305 25710 912 3.5 789 3.1  
04-04 305 34770 1265 3.6 1033 3.0  
365 40639 1477 3.6 1216 3.0  
2 LACT: 95620 3481 3.6 2998 3.1 LB

**A MARK C.J. GILBROOK GRAND ET**  
HOCANM393207 \*BLF\*MFF ET GT  
VG-86-5YR-CAN EXTRA'93  
**STELBRO JENINE AEROSTAR**  
HOCANF5337384 \*BLF GT  
VG-85-4YR-CAN

**MAUGHLIN STORM**  
HOCANM5457798 \*BLF\*TV\*BRC ET GT  
EX-CAN EXTRA'96

**BRAEDALE GYPSY GRAND**  
HOCANF5912235 GT  
VG-88-5YR-CAN 37\*(0/185)

**EMPRISE BELL ELTON**  
HOUSAM1912270 \*BLC\*CV\*DPF GT  
EX-95-11YR-USA SP'98  
**SNOW-N DENISES DELLIA**  
HOUSAF12895802 \*BLF\*TV GT  
EX-95-2E-USA GMD DOM 5\*(0/25)

**KED JUROR-ET**  
HOUSAM2124357 \*BLF\*TV\*DPF ET GT  
GP-82-10YR-USA GM ST'98

**REGANCREST AEROSTAR BERT-ET**  
HOUSAF14481642 ET  
EX-90-5YR-USA DOM GMD  
05-02 305 32240 1168 3.6 1029 3.2  
365 37789 1358 3.6 1214 3.2  
4 LACT: 109350 4030 3.7 3556 3.3 LB