

Announcing...

THE KINGSMILL FALL CLASSIC

160 Head Sell From The Greatest Females Ever Bred & Developed At Kingsmill!

September 9, 2010 • 10:30 AM • Intercourse, PA



TRI-DAY ASHLYN-ET (2E 96-GMD-DOM)

4-09 2x 365 43,090 4.8 2079 3.5 1503
All-American. All-Canadian. All-World. A truly amazing brood cow with at least 22 EX daughters to date and 2 at 2E-95!

Selling will be her daughters by Destry, Lightning & Roy!

DELE STORMATIC SHADAISY (2E 93)

GTPI +1756 4/10
4-01 2x 365 42,790 3.8 1622
3.1 1339

Winning Aged Cow & Res. Grand Champion at the 2010 Parade of Stars. Backed by a 2E 91 Durham w/ 1475F, then 3 more VG dams. *Her Planet daughter with a PTPI of +1935 sells.*

CARROUSEL RBN RAQUEL-RED-ET (2E 93)

5-09 2x 365 53,060 3.9 2091
3.1 1665

From the magnificent Renita Ranger (3E 94), Raquel is making daughters with a very special cut to them. *Selling will be Raquel's red Shaquille daughter.*

ERNEST-ANTHONY TOPAZ-ET (EX 93)

4-10 2x 365 43,850 4.6 2006
3.4 1481

A Durham from the one & only SD Tobi (3E 96-DOM); next dam is 2E 95 Inspiration Tina! *Her Shottle daughter will sell.*

STEPIDO D W BEAUTY (2E 95)

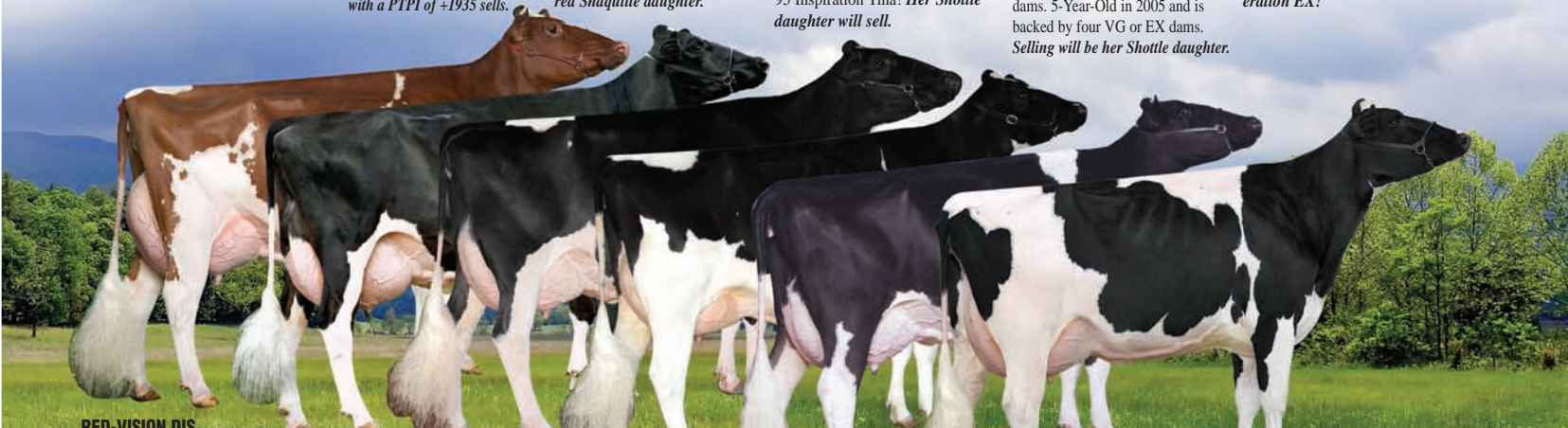
6-10 2x 365 31,415 3.6 1134
2.8 869

Beauty was a 3x HM All-American and is backed by four VG or EX dams. 5-Year-Old in 2005 and is backed by four VG or EX dams. *Selling will be her Shottle daughter.*

ASTRAHOE RALEIGH LEE ROBUST (EX 92)

3-06 2x 365 36,660 5.5 2021
3.5 1284

A Lee from the 2E 93 Rosa Raleigh and she completes 14 generations of EX Rosa's! *Her Shottle daughter will sell & is a potential 15th generation EX!*



RED-VISION DIS DELLA-RED-ET (EX 91)

5-09 2x 365 44,150 4.5 1978
3.1 1362

Res. Grand at the 2008 Southern Parade of Stars & Res. Grand at the 2005 Grand International R&W Show, Della can not only milk and show, but she has at least six VG, 2Y daughters to date! *Selling will be her daughter by Jet-Red!*

MISS RUBENS AMY-ET (2E 94)

6-11 2x 365 42,080 4.1 1730
3.2 1353

Her dam is Chief Adeen (2E 94-DOM) and the next dam is 2E 94 Starbuck Ada! *Amy already has two 2-year-olds who have scored VG-88 & VG-89. Amy's Dundee daughter could be your ticket in to this successful family!*

SCIENTIFIC SWEETIE RAE-ET (2E 92)

5-07 2x 365 29,754 5.0 1485
3.6 1068

Mark her down as a 7th generation EX Roxy that averages 92.7 points! *She is the dam of an amazing Laurin heifer that will sell.*

DEL-HOLLOW STORMIN TRUDY-ET (EX 93)

4-07 2x 365 30,056 3.2 972 3.0 900

Trudy is another 7th generation EX Roxy, but from the only branch of the family with every generation scored EX 92 or higher! *Selling will be her Laurin daughter.*

BROOK-LODGE MISS PATTIE (2E 94)

7-07 2x 365 36,080 4.2 1510
3.1 1112

Miss Pattie was the All-American Jr. 2 in 2002 & is backed by an EX 91 dam & 2E 90 grand-dam. *Her Laurin heifer will sell.*

OCEAN-VIEW DURHAM JEAN-ET (EX 90)

3-10 2x 365 43,440 4.2 1846 3.5 1532

Backed by seven VG or EX dams, her family continues to stand the test of time, producing great young cows generation after generation. *Selling is her fancy Sanchez daughter.*

Join us on September 9th as we present an exciting line up from the heart of the Kingsmill herd and a very special group of guest consignments from Liddleholme Holsteins. See the entire catalog online at www.cattlexchange.com

SALE CO-MANAGED BY/CATALOGS



David Falk | Mitch Hockett

Phone: 919-247-8727 | Fax: 919-596-7875
5914 Kemp Rd., Durham, NC 27703
Email: info@kingsmillfarmii.com
www.kingsmillfarmii.com

The CATTLE EXCHANGE

Dave & Merry Rama • 4236 Co. Hwy. 18, Delhi, NY 13753
Ph: 607/746-2226 • Fax: 607/746-2911
email: daveramasr@cattlexchange.com • www.cattlexchange.com
License #AU-002463-E

STONEHURST FARM, INC.

1541 Lime Valley Rd. • Strasburg, PA 17579
Don Welk • 717-575-4700 Harold Welk • 717-575-3555
fax: 717-687-8824
email: sales@stonehurstfarm.net
website: holsteinworld.com/stonehurstfarm

